

Highwood Copse Primary School

Photographs for Western Area Planning Committee
Application 20/02779/COMIND



View of temporary access road from Newbury College (looking north)



View of School site with entrance gate and staff parking from the A339 link road (looking south-west)



View of School site from A339 Link Road (looking south-west)



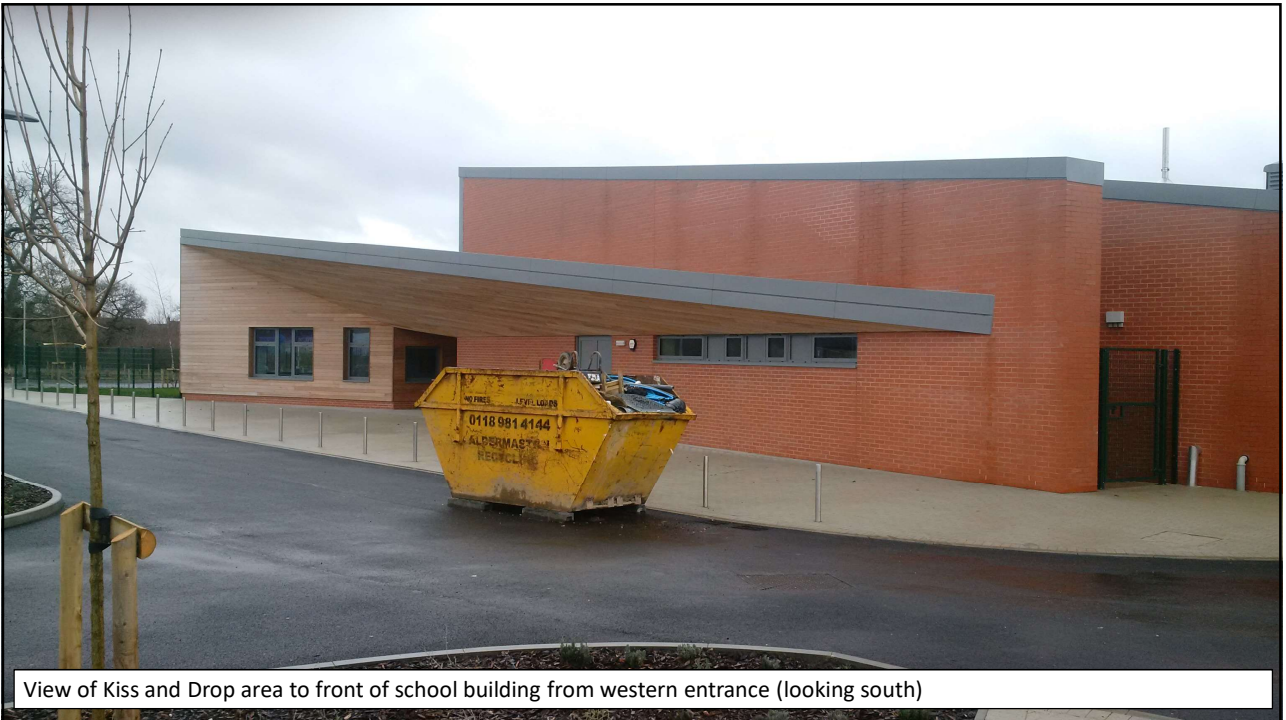
View of A339 Link Road with bund to northern side (looking west)



View of A339 Link Road with layby. School site is on the left (looking west toward Sandleford allocated site)



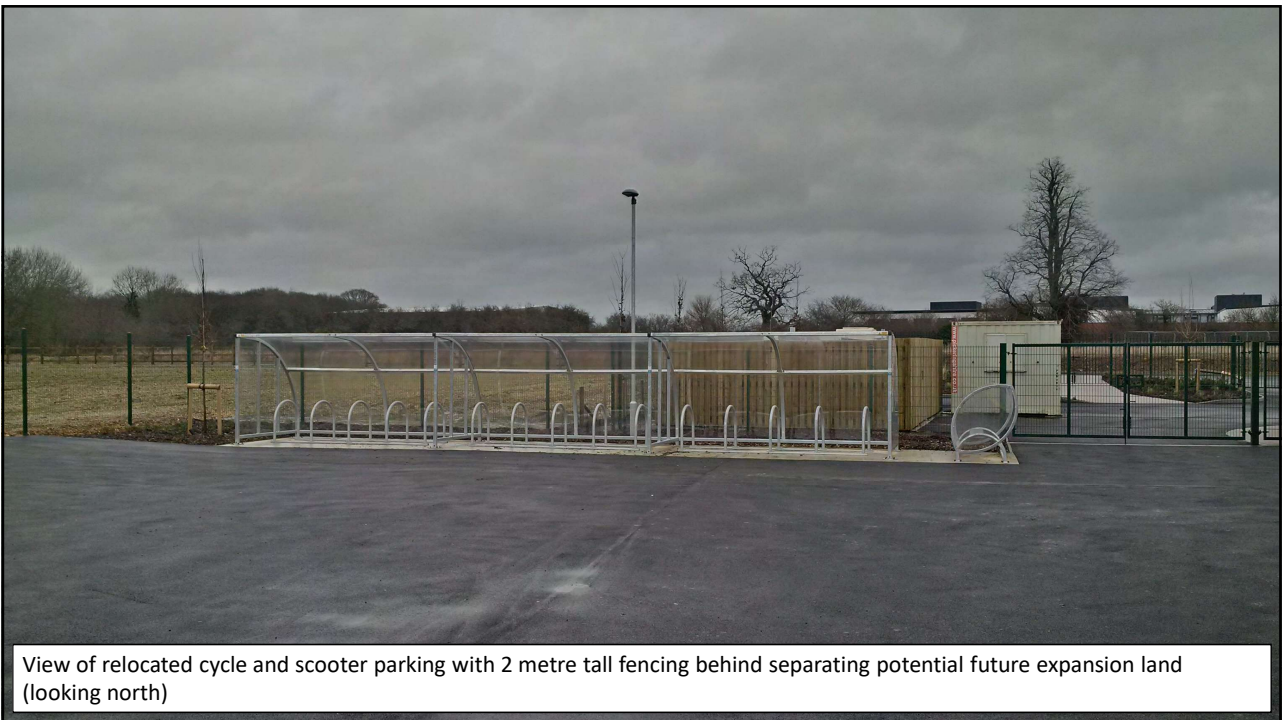
View of A339 Link Road with area for potential expansion of school on the right (looking east)



View of Kiss and Drop area to front of school building from western entrance (looking south)



View of northern boundary of school site and area previously proposed for kiss and drop parking (looking north-east)



View of relocated cycle and scooter parking with 2 metre tall fencing behind separating potential future expansion land (looking north)



View of playing pitch in foreground with 2 metre tall fence separating potential future expansion land required for 2FE school (looking north)



View of hard surface MUGA surrounded by 2.4 metre tall fencing with 1.1 metre tall picket fencing in foreground (looking east)



View of eastern side of school building showing 1.1 metre tall picket fencing (looking north)



View of staff parking area within school site with electric vehicle charging points shown (looking south-west)